

## Accommodation Listing

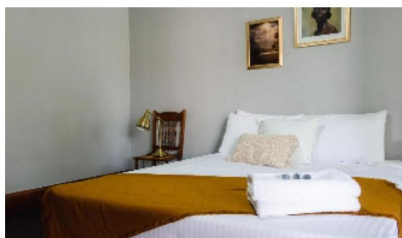
### Hotels & Motels - 1 km up to 15 kms away



Tocal

#### **TOTAL GLENDARRA ACCOMMODATION**

From \$80



Maitland

#### **THE FAMILY HOTEL MAITLAND**

From \$85



East Maitland

#### **BEST WESTERN ENDEAVOUR MOTEL**

From \$149



Rutherford

#### **HUNTER GATEWAY MOTEL**

From \$139



Rutherford

#### **MAITLAND CITY MOTEL**

From \$120



Maitland

#### **MERCURE MONTE PIO HOTEL AND CONFERENCE CENTRE**

From \$145



Maitland

#### **IMPERIAL MAITLAND**

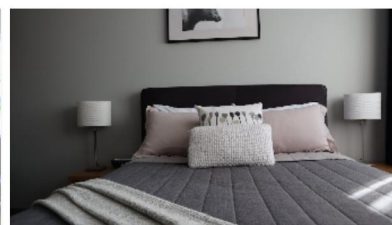
From \$80



East Maitland

#### **MOLLY MORGAN MOTOR INN**

From \$140



East Maitland

#### **THE WINDSOR CASTLE HOTEL**

From \$119

**Self Contained** - 2 kms up to 15 kms away



Maitland

**ADAMS STREET MAITLAND**

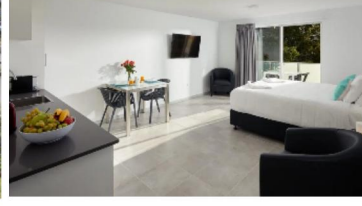
From \$155



Rosebrook

**CADAIR COTTAGE**

From \$300



East Maitland

**EAST MAITLAND  
EXECUTIVE APARTMENTS**

From \$129



East Maitland

**FIELDSEND COTTAGE**

From \$150



Rosebrook

**HUNTER RIVER RETREAT**

From \$240



Maitland

**HUNTER STUDIOS  
MAITLAND**

From \$220.00



Maitland

**QUEST SERVICED  
APARTMENTS MAITLAND**

From \$159



Mindaribba

**RIBBA COTTAGE - GRAND  
RIVERFRONT PASTORAL  
ESTATE**

From \$263



Morpeth

**SURGEON'S COTTAGE**

From \$170

## **Bed & Breakfast** - 5 km's up to 15 km's away



Bolwarra

**MADDIES OF BOLWARRA**

From \$205



Morpeth

**WILLIAM ARNOTT  
BOUTIQUE HOTEL**

From \$120

## **Caravan Parks** - 5 km's up to 15 km's away



**Maitland Showground** offers spacious, grassed and powered sites for camping, subject to availability.

Sites are available at \$25 per site per night.

We recommend that you call the Maitland Showground Office on (02) 4933 5052 to check availability prior to your arrival. The Office is open from 9am to 2pm Monday – Friday. Outside of these hours, please call our onsite Caretaker on 0429 940 065.



South Maitland

**COACHSTOP CARAVAN  
PARK**

From \$30

Coachstop Caravan Park is located in prime position for those wanting to visit the Hunter Region.

Enjoy your stay and visit popular attractions such as Maitland gaol, and Maitland Park and walk alongside the Hunter River.

Just a short distance from the showground & popular cafes.

With plenty of attractions to see, Maitland is a great central point for those who want to explore the Hunter Region and take a trip to Newcastle.